

ASTECCCM-iBIS

**Easy
Timelapse**

**Individual
Culture**

**Good
Post PGS
Solution**

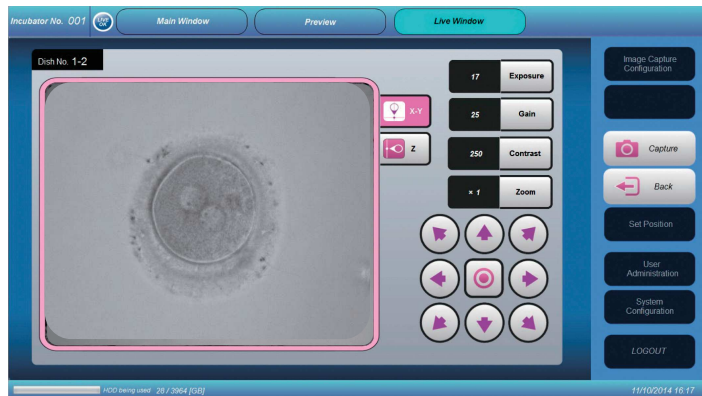


Made in Japan

Embryo Viewing Incubator



Touchpanel user Interface



Optimized for routine observation

Specifications: CCM-iBIS

External dimensions	W527 x D845 x H380mm
Number of chambers	9 Chambers
Size of chambers	W72 x D84 x H117mm
Temperature range	
Operational environment	24 ~ 38 °C
Temp. accuracy	±0.3°C at 26°C ambient
CO ₂ sensor	IR Sensor
CO ₂ accuracy	±0.3%
O ₂ sensor	Zirconia Sensor
O ₂ accuracy	±0.5%
Camera	130 Mega pixels CCD
Objective lens	10 x
Light source	Red LED
Power	115V/230V 50/60Hz
Weight	60 kg
Classifications	EN61010-1:2010 IEC61326-1:2013 IEC61000-3-2:2014 IEC61000-3-3:2013



**Light source
built in the lid**



**Designed dish to
make sure safety**

Address:
4-6-15, Minamizato, Shime,
Kasuya, Fukouka, 811-2207
Japan

Contact:
Phone +81-92-935-5666
Fax +81-92-935-5601
Email info@astec-bio.com

